



Maine Tower, 9 Harbour Way, London, E14 9DN  
Offers over £475,000

 1  1  1  B

Situated on a high floor within the landmark Maine Tower at Harbour Central, this beautifully presented one-bedroom apartment offers stylish contemporary living with impressive views across the London skyline.

**\*\*Photos have been digitally dressed for example purposes.**

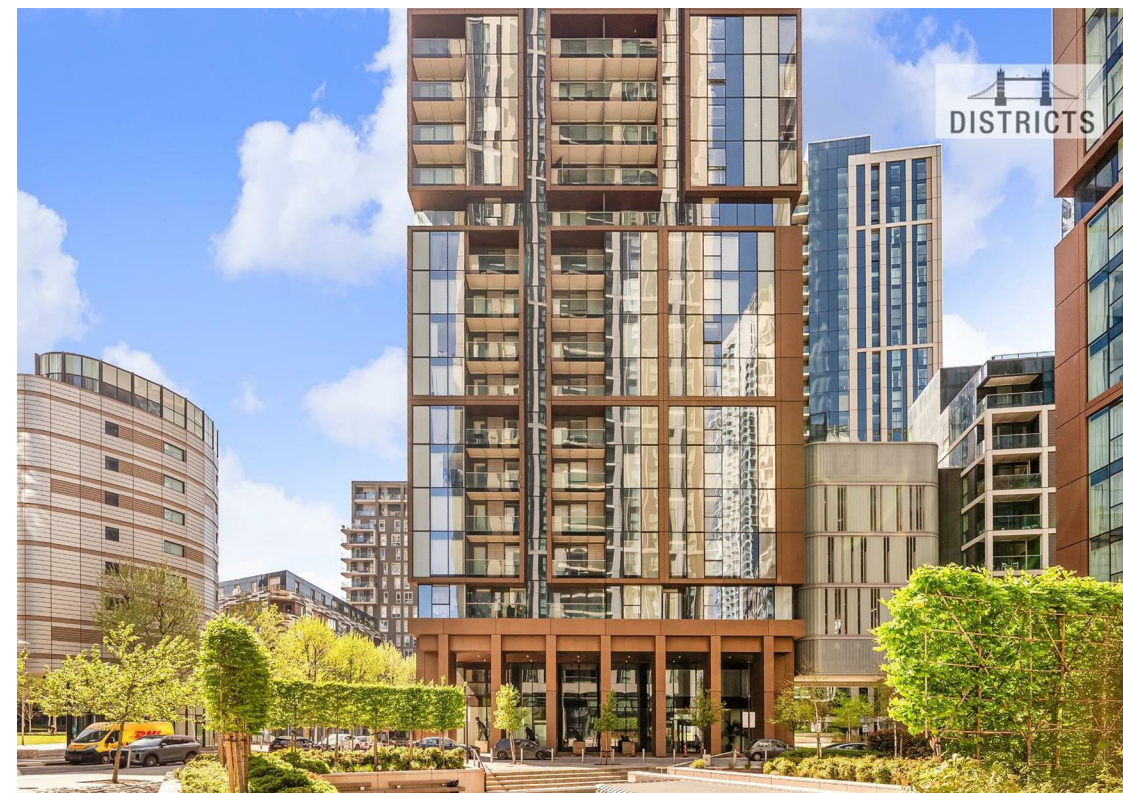
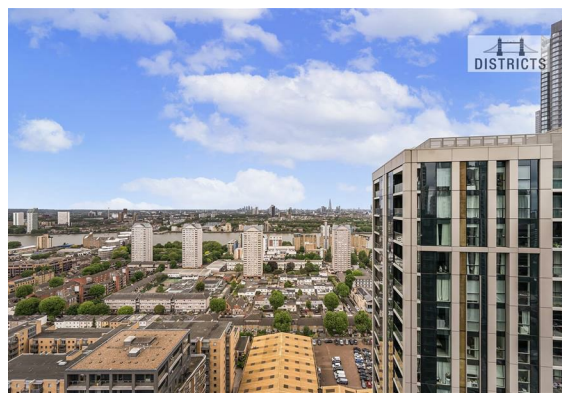
The apartment features a bright open-plan living space leading onto a private balcony, perfect for enjoying the panoramic city outlook. Finished to a high specification throughout, the property benefits from walnut hardwood flooring, comfort cooling, recessed LED lighting and bespoke fitted storage. The sleek modern kitchen is complete with stone worktops and fully integrated Smeg appliances, while the spacious bedroom includes floor-to-ceiling fitted wardrobes and soft oatmeal carpeting.

Residents of Harbour Central enjoy access to a premium lifestyle offering including a 24-hour concierge, gym, games room, and business lounge, all moments from Canary Wharf and superb transport connections via the Elizabeth Line, DLR and Underground.

Leasehold: 988 Years remaining approximately  
Ground rent amount: Approx. £350 per annum  
Review period: Ask agent  
Service charge amount: Approx. £4,459.34 per annum  
Review period: Ask Agent  
Council tax band: E – Tower Hamlets

Electricity supply – Mains | Heating – Mains | Water Supply & Sewerage – Mains | Lift Access | Parking - No | Cladding: EWS1 Cert. available

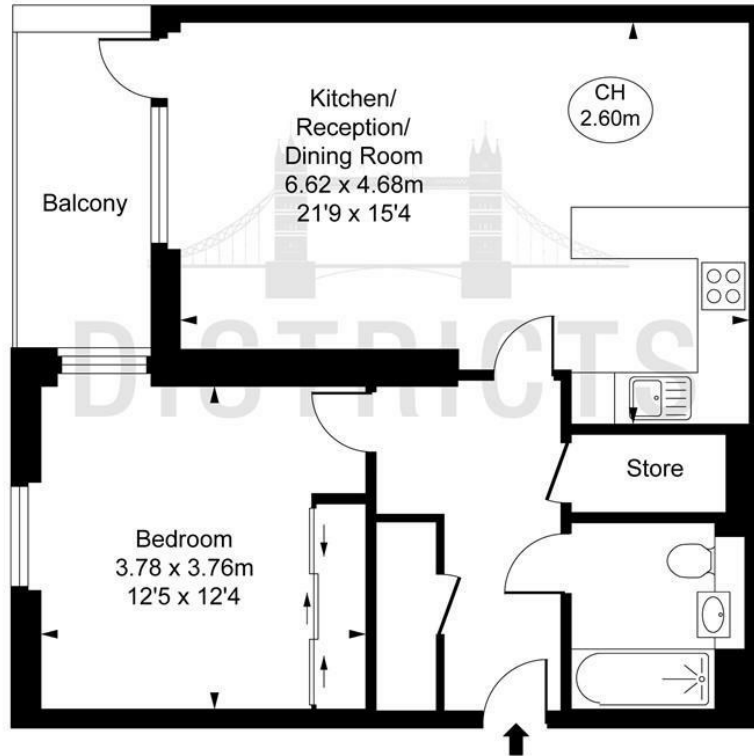
To check broadband and mobile phone coverage please visit Ofcom  
To check planning permission please visit Tower Hamlets Council Website, Planning & Building Control








**Maine Tower,**  
**Harbour Way, E14**  
 Approximate Gross Internal Area  
**59.66 sq m / 642 sq ft**  
 ( CH = Ceiling Heights )



This plan is not to scale. It is for guidance and not for valuation purposes.  
 All measurements and areas are approximate only, and have been prepared in accordance with the current edition of the RICS Code of Measuring Practice.  
 © Fulham Performance

Energy Efficiency Rating		Current	Potential
Very energy efficient - lower running costs			
(92 plus) <b>A</b>			
(81-91) <b>B</b>		<b>86</b>	<b>86</b>
(69-80) <b>C</b>			
(55-68) <b>D</b>			
(39-54) <b>E</b>			
(21-38) <b>F</b>			
(1-20) <b>G</b>			
Not energy efficient - higher running costs			
<b>England &amp; Wales</b>		EU Directive 2002/91/EC 	

These particulars, whilst believed to be accurate are set out as a general outline only for guidance and do not constitute any part of an offer or contract. Intending purchasers should not rely on them as statements of representation of fact, but must satisfy themselves by inspection or otherwise as to their accuracy. No person in this firm's employment has the authority to make or give any representation or warranty in respect of the property.